

TECHNICAL CATALOGUE

---

DISTRIBUTION MANIFOLD  
MADE OUT OF BRASS BAR  
AND STAINLESS STEEL





TEC



ITAP SpA, founded in Lumezzane (Brescia) in 1972, is currently one of the leading production companies in Italy of valves, fittings and distribution manifolds for plumbing and heating systems. Thanks to fully automated production processes, with 63 tooling machines and 25 assembly lines, we are able to produce 150,000 pieces per day. Our innate pursuit for innovation and observance of technical regulations in force is supported by the company certification ISO 9001: 2008. The company has always considered its focus on quality as the main tool to obtaining significant business results: today ITAP SpA is proud to offer products bearing the approval of numerous international certifying bodies.

THE COMPANY





TEC

A faded, perspective view of a manifold component, showing its rectangular shape and internal structure.

DISTRIBUTION  
MANIFOLD  
MADE OUT OF  
BRASS BAR AND  
STAINLESS STEEL

**ITAP MANIFOLDS ARE  
USED TO DISTRIBUTE  
HEAT-TRANSFER FLUID  
INSIDE A SYSTEM.**

MANIFOLDS

# 852

DISTRIBUTION MANIFOLD  
IN STAINLESS STEEL,  
CENTRES DISTANCE  
MM.50



| SIZE    | PRESSURE     | CODE        | PACKING |
|---------|--------------|-------------|---------|
| 1" x 2  | 10bar/145psi | 85201000250 | 6/96    |
| 1" x 3  | 10bar/145psi | 85201000350 | 6/72    |
| 1" x 4  | 10bar/145psi | 85201000450 | 6/24    |
| 1" x 5  | 10bar/145psi | 85201000550 | 6/24    |
| 1" x 6  | 10bar/145psi | 85201000650 | 6/24    |
| 1" x 7  | 10bar/145psi | 85201000750 | 3/36    |
| 1" x 8  | 10bar/145psi | 85201000850 | 3/12    |
| 1" x 9  | 10bar/145psi | 85201000950 | 3/12    |
| 1" x 10 | 10bar/145psi | 85201001050 | 3/12    |
| 1" x 11 | 10bar/145psi | 85201001150 | 3/12    |
| 1" x 12 | 10bar/145psi | 85201001250 | 3/12    |
| 1" x 13 | 10bar/145psi | 85201001350 | 3/12    |

## TECHNICAL SPECIFICATIONS

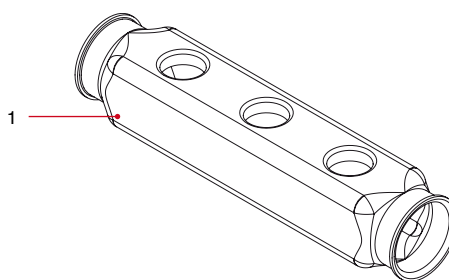
Manifolds in stainless steel AISI 304L with female outlets, suitable for fittings for copper, PEX, polybutylene or multilayer piping.

Maximum working temperature: 110°C.

Threads: ISO228 (equivalent to DIN EN ISO 228 and BS EN ISO 228).

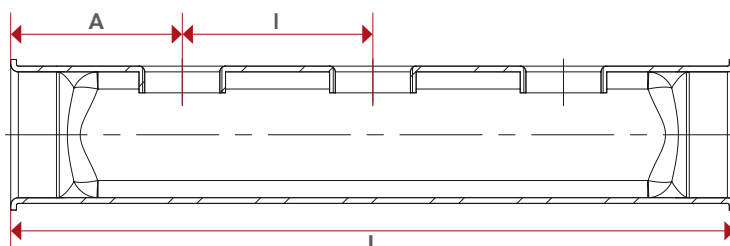
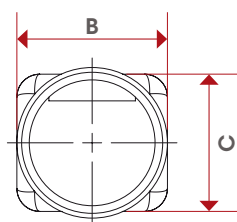
Size of the outlets: 1/2" F.

## MATERIALS



| POS. | DESCRIPTION | N. | MATERIAL                   |
|------|-------------|----|----------------------------|
| 1    | Body        | 1  | Stainless steel AISI 304 L |

## OVERALL DIMENSIONS



| L=50       | 1"   |
|------------|------|
| L-2        | 143  |
| L-3        | 193  |
| L-4        | 243  |
| L-5        | 293  |
| L-6        | 343  |
| L-7        | 393  |
| L-8        | 443  |
| L-9        | 493  |
| L-10       | 543  |
| L-11       | 593  |
| L-12       | 643  |
| L-13       | 693  |
| A          | 45   |
| B          | 39,5 |
| C          | 36   |
| Kg/cm² bar | 10   |
| LBS - psi  | 145  |

## CERTIFICATIONS



# 862

DISTRIBUTION MANIFOLD  
IN STAINLESS STEEL,  
BILATERAL OUTLETS,  
CENTRES DISTANCE  
MM.50

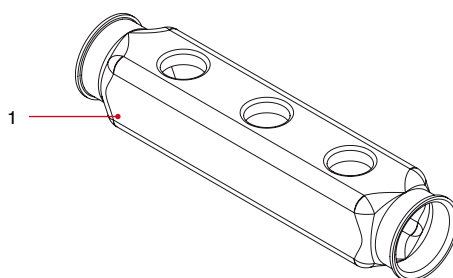


| SIZE    | PRESSURE     | CODE        | PACKING |
|---------|--------------|-------------|---------|
| 1" x 2  | 10bar/145psi | 86201000250 | 6/96    |
| 1" x 3  | 10bar/145psi | 86201000350 | 6/72    |
| 1" x 4  | 10bar/145psi | 86201000450 | 6/24    |
| 1" x 5  | 10bar/145psi | 86201000550 | 6/24    |
| 1" x 6  | 10bar/145psi | 86201000650 | 6/24    |
| 1" x 7  | 10bar/145psi | 86201000750 | 3/36    |
| 1" x 8  | 10bar/145psi | 86201000850 | 3/12    |
| 1" x 9  | 10bar/145psi | 86201000950 | 3/12    |
| 1" x 10 | 10bar/145psi | 86201001050 | 3/12    |
| 1" x 11 | 10bar/145psi | 86201001150 | 3/12    |
| 1" x 12 | 10bar/145psi | 86201001250 | 3/12    |
| 1" x 13 | 10bar/145psi | 86201001350 | 3/12    |

## TECHNICAL SPECIFICATIONS

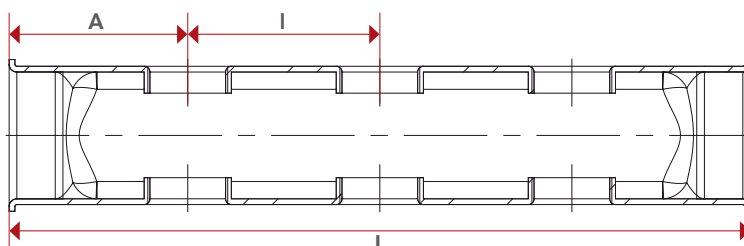
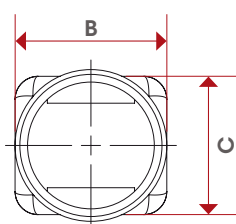
Manifolds in stainless steel AISI 304L with female outlets, suitable for fittings for copper, PEX, polybutylene or multilayer piping.  
Maximum working temperature: 110°C.  
Threads: ISO228 (equivalent to DIN EN ISO 228 and BS EN ISO 228).  
Size of the outlets: 1/2" F.

## MATERIALS



| POS. | DESCRIPTION | N. | MATERIAL                   |
|------|-------------|----|----------------------------|
| 1    | Body        | 1  | Stainless steel AISI 304 L |

## OVERALL DIMENSIONS



| L=50       | 1"   |
|------------|------|
| L-2+2      | 143  |
| L-3+3      | 193  |
| L-4+4      | 243  |
| L-5+5      | 293  |
| L-6+6      | 343  |
| L-7+7      | 393  |
| L-8+8      | 443  |
| L-9+9      | 493  |
| L-10+10    | 543  |
| L-11+11    | 593  |
| L-12+12    | 643  |
| L-13+13    | 693  |
| A          | 45   |
| B          | 39,5 |
| C          | 36   |
| Kg/cm² bar | 10   |
| LBS - psi  | 145  |

## CERTIFICATIONS





# 850/38

DISTRIBUTION  
MANIFOLD  
MADE OUT OF  
BRASS BAR



| SIZE      | PRESSURE     | CODE        | PACKING |
|-----------|--------------|-------------|---------|
| 3/4" x 2  | 10bar/145psi | 85000340238 | 6/90    |
| 3/4" x 3  | 10bar/145psi | 85000340338 | 6/60    |
| 3/4" x 4  | 10bar/145psi | 85000340438 | 6/42    |
| 3/4" x 5  | 10bar/145psi | 85000340538 | 6/36    |
| 3/4" x 6  | 10bar/145psi | 85000340638 | 6/30    |
| 3/4" x 7  | 10bar/145psi | 85000340738 | 3/27    |
| 3/4" x 8  | 10bar/145psi | 85000340838 | 3/21    |
| 3/4" x 9  | 10bar/145psi | 85000340938 | 3/21    |
| 3/4" x 10 | 10bar/145psi | 85000341038 | 3/21    |

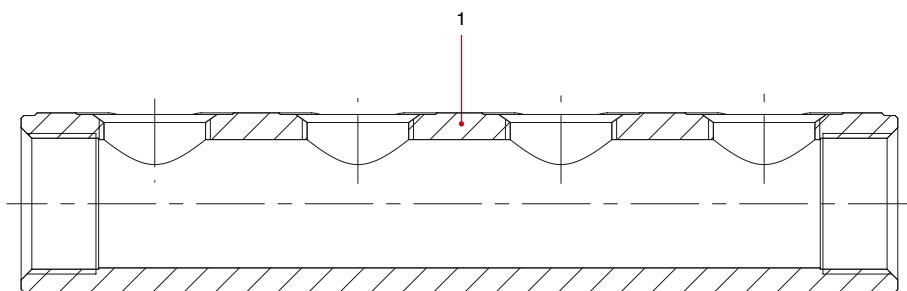
| SIZE    | PRESSURE     | CODE        | PACKING |
|---------|--------------|-------------|---------|
| 1" x 2  | 10bar/145psi | 85001000238 | 6/60    |
| 1" x 3  | 10bar/145psi | 85001000338 | 6/48    |
| 1" x 4  | 10bar/145psi | 85001000438 | 6/30    |
| 1" x 5  | 10bar/145psi | 85001000538 | 6/30    |
| 1" x 6  | 10bar/145psi | 85001000638 | 6/30    |
| 1" x 7  | 10bar/145psi | 85001000738 | 6/24    |
| 1" x 8  | 10bar/145psi | 85001000838 | 3/15    |
| 1" x 9  | 10bar/145psi | 85001000938 | 3/15    |
| 1" x 10 | 10bar/145psi | 85001001038 | 3/15    |
| 1" x 11 | 10bar/145psi | 85001001138 | 3/15    |
| 1" x 12 | 10bar/145psi | 85001001238 | 3/15    |

## TECHNICAL SPECIFICATIONS

Distribution manifold made out of profiled brass bars with female outlets, suitable for fittings for copper, PEX, polybutylene or multilayer piping.  
Maximum working temperature: 110°C.  
Threads: ISO228 (equivalent to DIN EN ISO 228 and BS EN ISO 228).  
Size of the outlets: 1/2" F.

**Centres distance mm.38.**

## MATERIALS



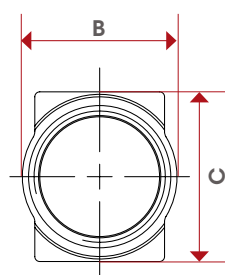
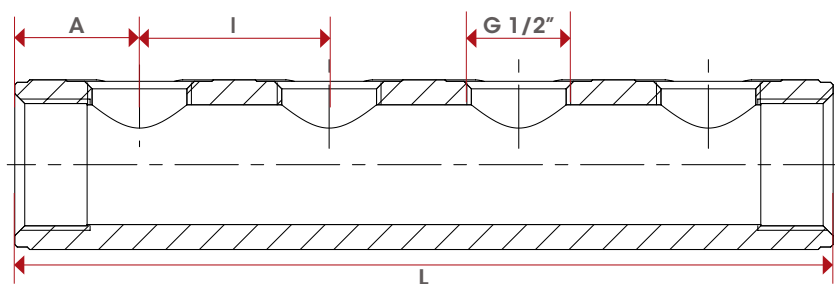
| POS. | DESCRIPTION | N. | MATERIAL         |
|------|-------------|----|------------------|
| 1    | Body        | 1  | Brass CW603N M-S |







TEC

OVERALL  
DIMENSIONS

|                        | 3/4" | 1"   |
|------------------------|------|------|
|                        | ≤38  | ≤38  |
| L-2                    | 88   | 98   |
| L-3                    | 126  | 136  |
| L-4                    | 164  | 174  |
| L-5                    | 202  | 212  |
| L-6                    | 240  | 250  |
| L-7                    | 278  | 288  |
| L-8                    | 316  | 326  |
| L-9                    | 354  | 364  |
| L-10                   | 392  | 402  |
| L-11                   |      | 440  |
| L-12                   |      | 478  |
| A                      | 25   | 30   |
| B                      | 31   | 37,5 |
| C                      | 34   | 37   |
| Kg/cm <sup>2</sup> bar | 10   | 10   |
| LBS - psi              | 145  | 145  |

## CERTIFICATIONS



BRASS BAR

# 850/50

DISTRIBUTION  
MANIFOLD  
MADE OUT OF  
BRASS BAR



| SIZE      | PRESSURE     | CODE        | PACKING |
|-----------|--------------|-------------|---------|
| 3/4" x 2  | 10bar/145psi | 85000340250 | 6/78    |
| 3/4" x 3  | 10bar/145psi | 85000340350 | 6/42    |
| 3/4" x 4  | 10bar/145psi | 85000340450 | 6/36    |
| 3/4" x 5  | 10bar/145psi | 85000340550 | 6/30    |
| 3/4" x 6  | 10bar/145psi | 85000340650 | 6/24    |
| 3/4" x 7  | 10bar/145psi | 85000340750 | 3/21    |
| 3/4" x 8  | 10bar/145psi | 85000340850 | 3/18    |
| 3/4" x 9  | 10bar/145psi | 85000340950 | 3/18    |
| 3/4" x 10 | 10bar/145psi | 85000341050 | 3/15    |

| SIZE    | PRESSURE     | CODE        | PACKING |
|---------|--------------|-------------|---------|
| 1" x 2  | 10bar/145psi | 85001000250 | 6/60    |
| 1" x 3  | 10bar/145psi | 85001000350 | 6/30    |
| 1" x 4  | 10bar/145psi | 85001000450 | 6/30    |
| 1" x 5  | 10bar/145psi | 85001000550 | 6/30    |
| 1" x 6  | 10bar/145psi | 85001000650 | 6/24    |
| 1" x 7  | 10bar/145psi | 85001000750 | 3/15    |
| 1" x 8  | 10bar/145psi | 85001000850 | 3/15    |
| 1" x 9  | 10bar/145psi | 85001000950 | 3/15    |
| 1" x 10 | 10bar/145psi | 85001001050 | 3/15    |
| 1" x 11 | 10bar/145psi | 85001001150 | 3/12    |
| 1" x 12 | 10bar/145psi | 85001001250 | 3/12    |

| SIZE       | PRESSURE     | CODE        | PACKING |
|------------|--------------|-------------|---------|
| 1"1/4 x 2  | 10bar/145psi | 85001140250 | 6/48    |
| 1"1/4 x 3  | 10bar/145psi | 85001140350 | 6/24    |
| 1"1/4 x 4  | 10bar/145psi | 85001140450 | 6/24    |
| 1"1/4 x 5  | 10bar/145psi | 85001140550 | 6/18    |
| 1"1/4 x 6  | 10bar/145psi | 85001140650 | 6/18    |
| 1"1/4 x 7  | 10bar/145psi | 85001140750 | 3/12    |
| 1"1/4 x 8  | 10bar/145psi | 85001140850 | 3/12    |
| 1"1/4 x 9  | 10bar/145psi | 85001140950 | 3/9     |
| 1"1/4 x 10 | 10bar/145psi | 85001141050 | 3/9     |
| 1"1/4 x 11 | 10bar/145psi | 85001141150 | 3/9     |
| 1"1/4 x 12 | 10bar/145psi | 85001141250 | 3/9     |

## TECHNICAL SPECIFICATIONS

Distribution manifold made out of profiled brass bars with female outlets, suitable for fittings for copper, PEX, polybutylene or multilayer piping.

Maximum working temperature: 110°C.

Threads: ISO228 (equivalent to DIN EN ISO 228 and BS EN ISO 228).

Size of the outlets: 1/2" F.

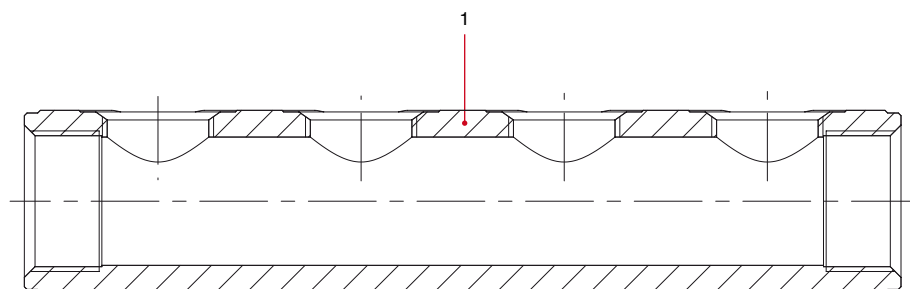
**Centres distance mm. 50.**



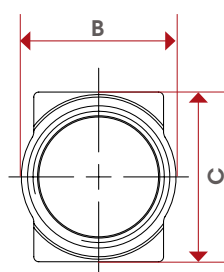
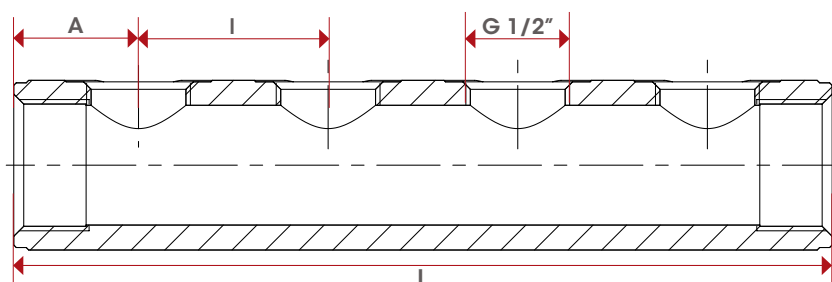


TEC

## MATERIALS



| POS. | DESCRIPTION | N. | MATERIAL         |
|------|-------------|----|------------------|
| 1    | Body        | 1  | Brass CW603N M-S |

OVERALL  
DIMENSIONS

|                        | 3/4" | 1"   | 1 1/4" |
|------------------------|------|------|--------|
|                        | L=50 | L=50 | L=50   |
| L-2                    | 100  | 110  | 110    |
| L-3                    | 150  | 160  | 160    |
| L-4                    | 200  | 210  | 210    |
| L-5                    | 250  | 260  | 260    |
| L-6                    | 300  | 310  | 310    |
| L-7                    | 350  | 360  | 360    |
| L-8                    | 400  | 410  | 410    |
| L-9                    | 450  | 460  | 460    |
| L-10                   | 500  | 510  | 510    |
| L-11                   |      | 560  | 560    |
| L-12                   |      | 610  | 610    |
| A                      | 25   | 30   | 30     |
| B                      | 31   | 37,5 | 47     |
| C                      | 34   | 37   | 50     |
| Kg/cm <sup>2</sup> bar | 10   | 10   | 10     |
| LBS - psi              | 145  | 145  | 145    |

## CERTIFICATIONS



BRASS BAR

# 860

DISTRIBUTION  
MANIFOLD  
MADE OUT  
OF BRASS BAR,  
BILATERAL OUTLETS



| SIZE    | PRESSURE     | CODE        | PACKING |
|---------|--------------|-------------|---------|
| 1" x 2  | 10bar/145psi | 86001000250 | 6/60    |
| 1" x 3  | 10bar/145psi | 86001000350 | 6/30    |
| 1" x 4  | 10bar/145psi | 86001000450 | 6/30    |
| 1" x 5  | 10bar/145psi | 86001000550 | 6/30    |
| 1" x 6  | 10bar/145psi | 86001000650 | 6/24    |
| 1" x 7  | 10bar/145psi | 86001000750 | 3/15    |
| 1" x 8  | 10bar/145psi | 86001000850 | 3/15    |
| 1" x 9  | 10bar/145psi | 86001000950 | 3/15    |
| 1" x 10 | 10bar/145psi | 86001001050 | 3/15    |
| 1" x 11 | 10bar/145psi | 86001001150 | 3/15    |
| 1" x 12 | 10bar/145psi | 86001001250 | 3/12    |

| SIZE       | PRESSURE     | CODE        | PACKING |
|------------|--------------|-------------|---------|
| 1"1/4 x 2  | 10bar/145psi | 86001140250 | 6/48    |
| 1"1/4 x 3  | 10bar/145psi | 86001140350 | 6/30    |
| 1"1/4 x 4  | 10bar/145psi | 86001140450 | 6/30    |
| 1"1/4 x 5  | 10bar/145psi | 86001140550 | 6/18    |
| 1"1/4 x 6  | 10bar/145psi | 86001140650 | 6/18    |
| 1"1/4 x 7  | 10bar/145psi | 86001140750 | 3/12    |
| 1"1/4 x 8  | 10bar/145psi | 86001140850 | 3/12    |
| 1"1/4 x 9  | 10bar/145psi | 86001140950 | 3/12    |
| 1"1/4 x 10 | 10bar/145psi | 86001141050 | 3/9     |
| 1"1/4 x 11 | 10bar/145psi | 86001141150 | 3/9     |
| 1"1/4 x 12 | 10bar/145psi | 86001141250 | 3/9     |

## TECHNICAL SPECIFICATIONS

Distribution manifold made out of profiled brass bars with female outlets, suitable for fittings for copper, PEX, polybutylene or multilayer piping. Maximum working temperature: 110°C.

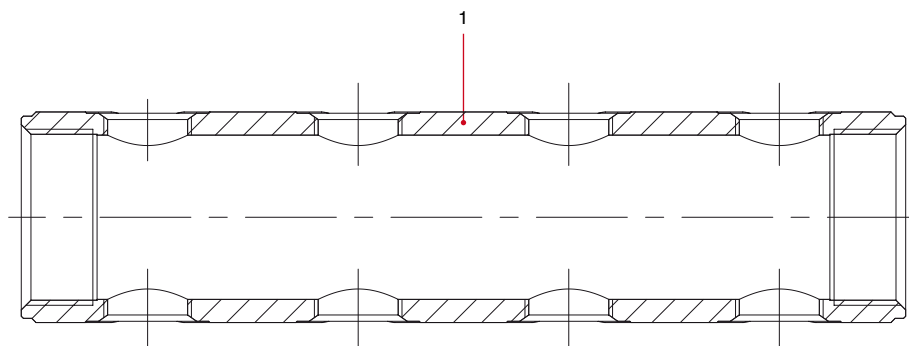
Threads: ISO228 (equivalent to DIN EN ISO 228 and BS EN ISO 228).

Size of the outlets: 1/2" F.

**Bilateral outlets.**

**Centres distance mm. 50.**

## MATERIALS



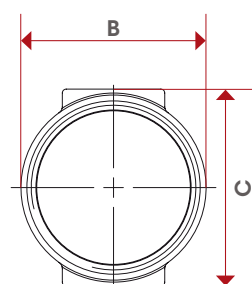
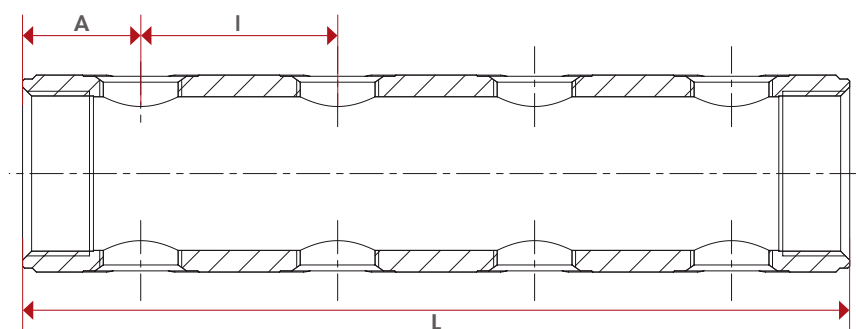
| POS. | DESCRIPTION | N. | MATERIAL         |
|------|-------------|----|------------------|
| 1    | Body        | 1  | Brass CW603N M-S |





TEC

## OVERALL DIMENSIONS



|                        | 1"   | 1 1/4" |
|------------------------|------|--------|
|                        | L=50 | L=50   |
| L-2+2                  | 110  | 110    |
| L-3+3                  | 160  | 160    |
| L-4+4                  | 210  | 210    |
| L-5+5                  | 260  | 260    |
| L-6+6                  | 310  | 310    |
| L-7+7                  | 360  | 360    |
| L-8+8                  | 410  | 410    |
| L-9+9                  | 460  | 460    |
| L-10+10                | 510  | 510    |
| L-11+11                | 560  | 560    |
| L-12+12                | 610  | 610    |
| A                      | 30   | 30     |
| B                      | 37,5 | 47     |
| C                      | 37   | 50     |
| Kg/cm <sup>2</sup> bar | 10   | 10     |
| LBS - psi              | 145  | 145    |

## CERTIFICATIONS



BRASS BAR

# 499

UNIVERSAL  
PLASTIC BOX  
FOR MANIFOLDS



| SIZE       | CODE      | PACKING |
|------------|-----------|---------|
| 350x350x90 | 499350350 | 1/0     |
| 500x350x90 | 499500350 | 1/0     |
| 650x350x90 | 499650350 | 1/0     |
| 800x400x90 | 499800400 | 1/0     |

## TECHNICAL SPECIFICATIONS

ITAP plastic box with the kit art. 499CS and 499CC is suitable for the use with manifolds of any manufacturer.

The cover is equipped with ventilation holes. Supplied with a removable shield to protect the manifolds from the plastering holes.

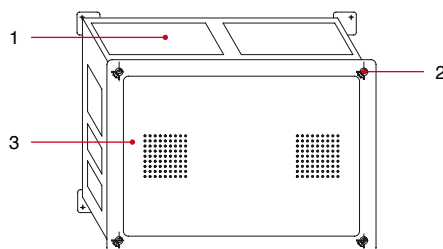
Available sizes:

mm.350xmm.350, mm.500xmm.350,

mm.650xmm.350, mm.800xmm.400.

Usable depth: mm.90, mm.95.

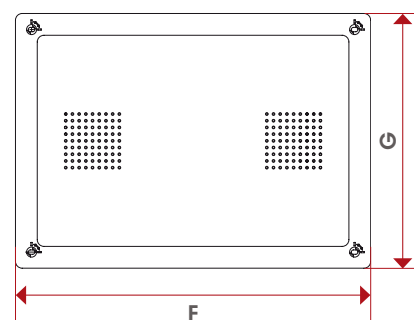
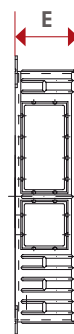
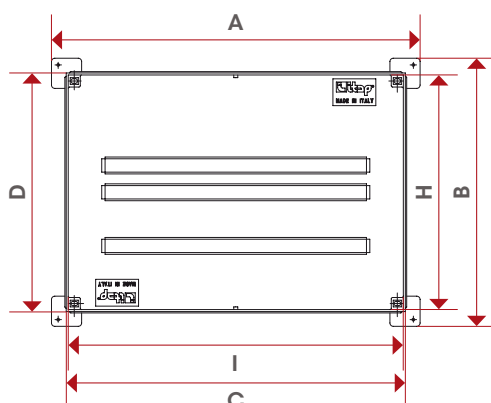
## MATERIALS



| POS. | DESCRIPTION | N. | MATERIAL       |
|------|-------------|----|----------------|
| 1    | Box         | 1  | Polystyrene PS |
| 2    | Screw       | 4  | Nylon          |
| 3    | Cover       | 1  | Polystyrene PS |

## OVERALL DIMENSIONS

|   | 350 x 350 x 90 | 500 x 350 x 90 | 650 x 350 x 90 | 800 x 400 x 95 |
|---|----------------|----------------|----------------|----------------|
| A | 400            | 550            | 700            | 850            |
| B | 400            | 400            | 400            | 450            |
| C | 360            | 510            | 660            | 810            |
| D | 360            | 360            | 360            | 410            |
| E | 90             | 90             | 90             | 95             |
| F | 380            | 530            | 680            | 830            |
| G | 380            | 380            | 380            | 430            |
| H | 350            | 500            | 650            | 800            |
| I | 350            | 350            | 350            | 400            |



# 499CS

SET TO FIX SIMPLE  
MANIFOLDS TO  
THE PLASTIC BOX

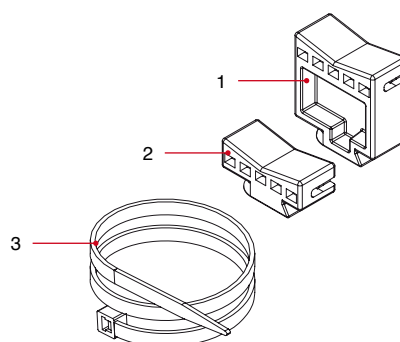


| SIZE | CODE  | PACKING |
|------|-------|---------|
| -    | 499CS | 1/50    |

## TECHNICAL SPECIFICATIONS

Consisting of: 2 long brackets, 2 short brackets, 4 plastic strips.  
**Suitable for simple forged or cast manifolds.**

## MATERIALS



| POS. | DESCRIPTION   | N. | MATERIAL      |
|------|---------------|----|---------------|
| 1    | Bracket       | 2  | Polypropylene |
| 2    | Bracket       | 2  | Polypropylene |
| 3    | Plastic strip | 2  | Nylon         |

# 499CC

SET TO FIX DUAL  
MANIFOLDS TO  
THE PLASTIC BOX

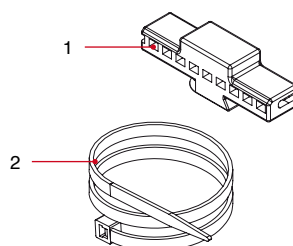


| SIZE | CODE  | PACKING |
|------|-------|---------|
| -    | 499CC | 1/50    |

## TECHNICAL SPECIFICATIONS

Consisting of: 2 brackets for dual manifolds, 2 plastic strips.  
**Suitable for dual manifolds.**

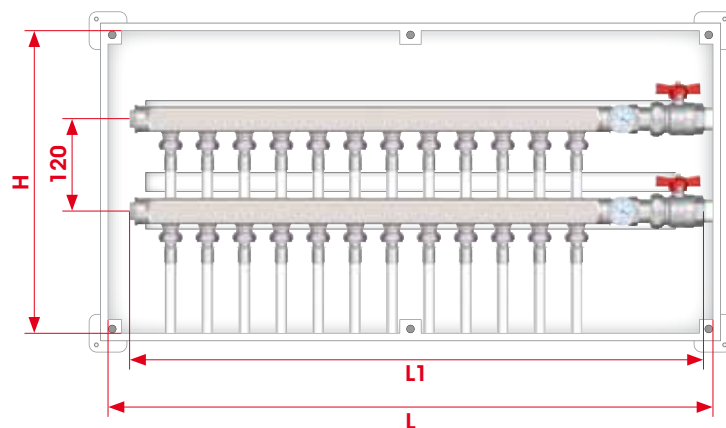
## MATERIALS



| POS. | DESCRIPTION   | N. | MATERIAL      |
|------|---------------|----|---------------|
| 1    | Bracket       | 2  | Polypropylene |
| 2    | Plastic strip | 2  | Nylon         |

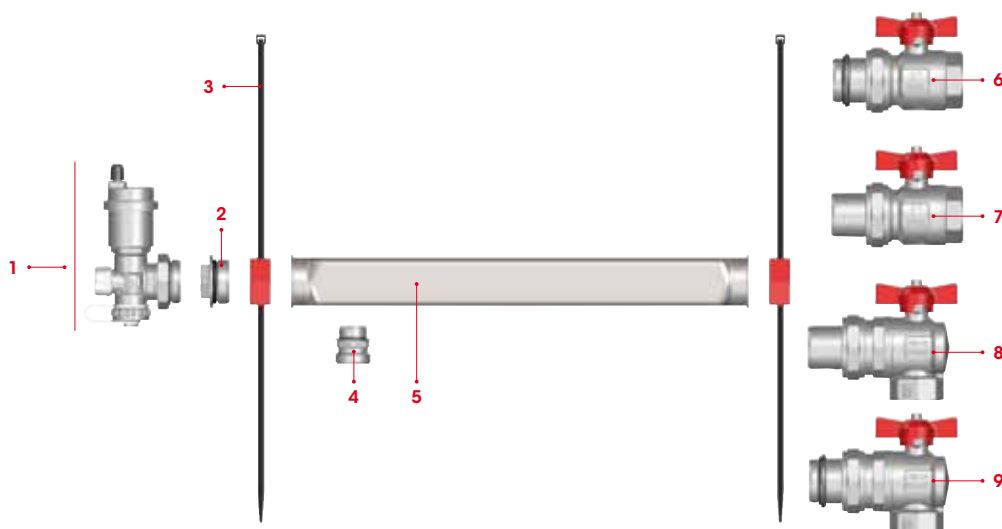


## POSITIONING THE MANIFOLD ART. 852 INTO PLASTIC BOXES



| CODE     | 499.350.350 | 499.500.350 | 499.650.350 | 499.800.400 |
|----------|-------------|-------------|-------------|-------------|
| LxH (mm) | 350x350     | 500x350     | 650x350     | 800x400     |
| Outlets  | 3           | 6           | 9           | 12          |
| MANIFOLD | 1"          |             |             |             |
| L1       | 315         | 465         | 615         | 765         |

## ACCESSORIES CHART ART. 852 FOR PLASTIC BOXES



| POS | ART   | DESCRIPTION  |
|-----|-------|--|
| 1   | 489AR | Adjustable end piece with drain valve and automatic air vent valve |
| 2   | 494   | Male end cap with o-ring   |
| 3   | 499CS | Plastic strip to fix the manifold                                  |
| 4   | 518   | Male/male adapter  |
| 5   | 852   | Distribution manifold in stainless steel                           |
| 6   | 098S  | Ball valve for manifolds with o-ring on the union                  |
| 7   | 098   | Ball valve for manifolds   |
| 8   | 298   | Angle ball valve for manifolds                                     |
| 9   | 298S  | Angle ball valve for manifolds with o-ring on the union            |

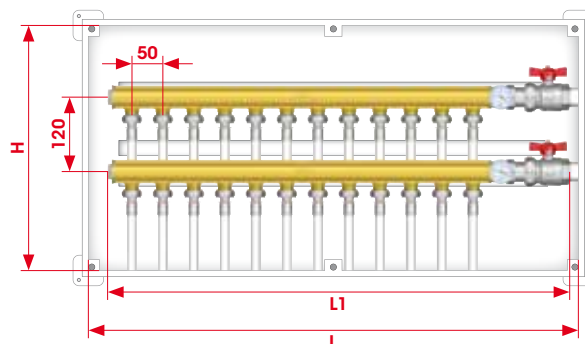
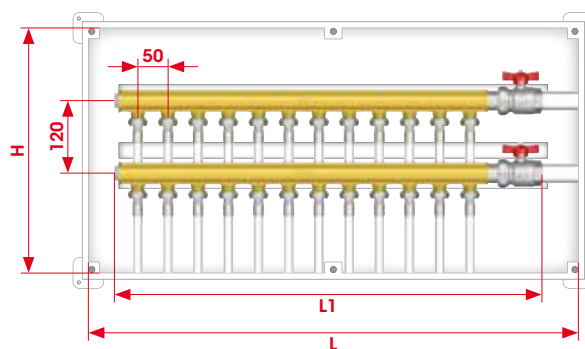


## POSITIONING THE MANIFOLD ART. 850 INTO PLASTIC BOXES

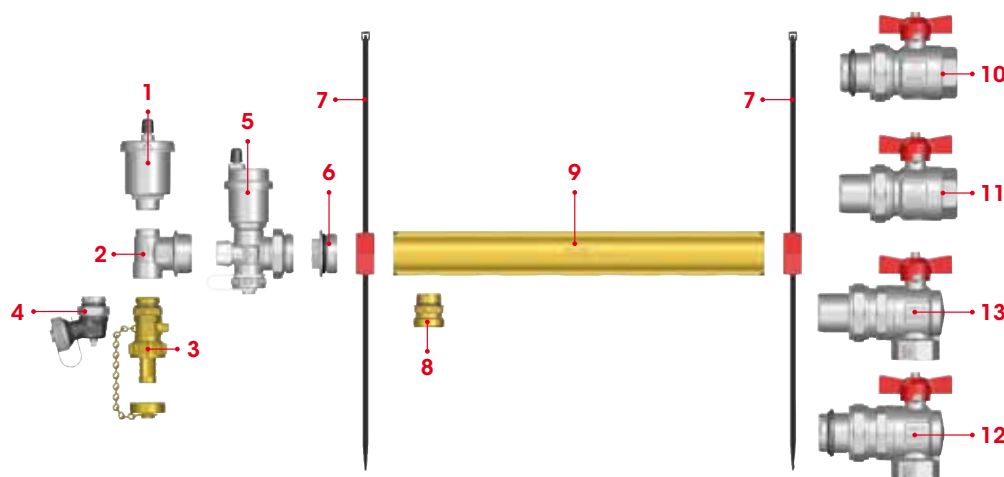
| CODE     | 499.350.350 | 499.500.350 | 499.650.350 | 499.800.400 |
|----------|-------------|-------------|-------------|-------------|
| LxH (mm) | 350x350     | 500x350     | 650x350     | 800x400     |
| Outlets  | 5           | 8           | 10          |             |
| MANIFOLD | 3/4"        |             |             |             |
| L1       | 330         | 480         | 580         |             |

| CODE     | 499.350.350 | 499.500.350 | 499.650.350 | 499.800.400 |
|----------|-------------|-------------|-------------|-------------|
| LxH (mm) | 350x350     | 500x350     | 650x350     | 800x400     |
| Outlets  | 4           | 7           | 10          | 12          |
| MANIFOLD | 1"          |             |             |             |
| L1       | 335         | 485         | 635         | 735         |

| CODE     | 499.350.350 | 499.500.350 | 499.650.350 | 499.800.400 |
|----------|-------------|-------------|-------------|-------------|
| LxH (mm) | 350x350     | 500x350     | 650x350     | 800x400     |
| Outlets  | 3           | 6           | 9           | 12          |
| MANIFOLD | 1"1/4       |             |             |             |
| L1       | 300         | 450         | 600         | 750         |



## ACCESSORIES CHART ART. 850 FOR PLASTIC BOX



| POS | ART      | DESCRIPTION  |
|-----|----------|--|
| 1   | 362/362R | Automatic air vent valve   |
| 2   | 490      | Male 3-way end fitting for manifold                                |
| 3   | 139      | Drain ball valve with brass hose connection                        |
| 4   | 489SO    | Adjustable drain cock  |
| 5   | 489AR    | Adjustable end piece with drain valve and automatic air vent valve |
| 6   | 494      | Male end cap with o-ring   |
| 7   | 499CS    | Set to fix simple manifolds to box                                 |
| 8   | 518      | Male/male adapter  |
| 9   | 850      | Distribution manifold made out of brass bar                        |
| 10  | 098S     | Ball valve for manifolds with o-ring on the union                  |
| 11  | 098      | Ball valve for manifolds   |
| 12  | 298S     | Angle ball valve for manifolds with o-ring on the union            |
| 13  | 298      | Angle ball valve for manifolds                                     |

# 498

## METAL BOX FOR MANIFOLDS



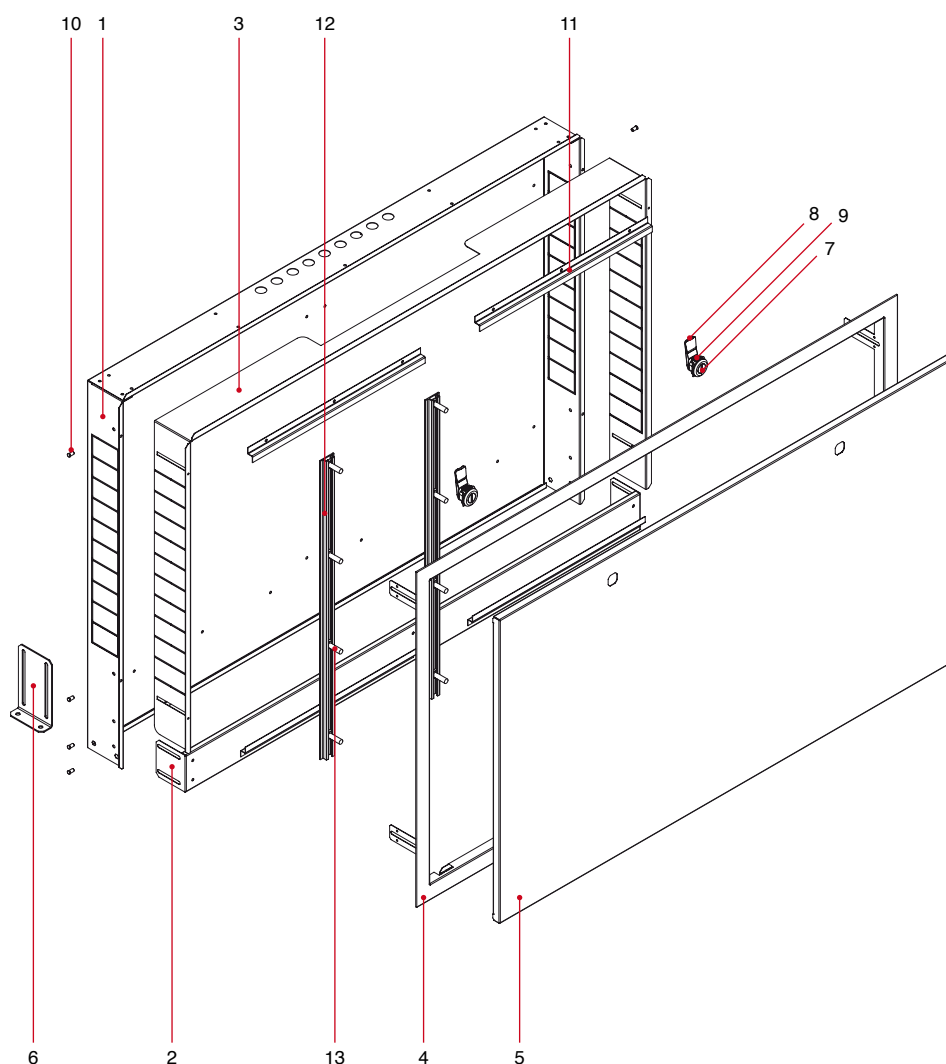
| SIZE              | CODE       | PACKING |
|-------------------|------------|---------|
| 500x600x(80-130)  | 498500600  | 1/1     |
| 600x600x(80-130)  | 498600600  | 1/1     |
| 700x600x(80-130)  | 498700600  | 1/1     |
| 800x600x(80-130)  | 498800600  | 1/1     |
| 1000x600x(80-130) | 4981000600 | 1/1     |
| 1100x600x(80-130) | 4981100600 | 1/1     |

### TECHNICAL SPECIFICATIONS

Complete with basement and support for floor installation.  
Equipped with plaster protection.

Enclosure, telescopic door frame and door in zincplated steel.  
The telescopic door frame and the door are painted.  
Adjustable depth: from mm. 80 to mm. 130.  
Minimum depth for Itap manifolds installation: mm. 90.  
Adjustable height: from mm. 700 to mm. 800.

### MATERIALS

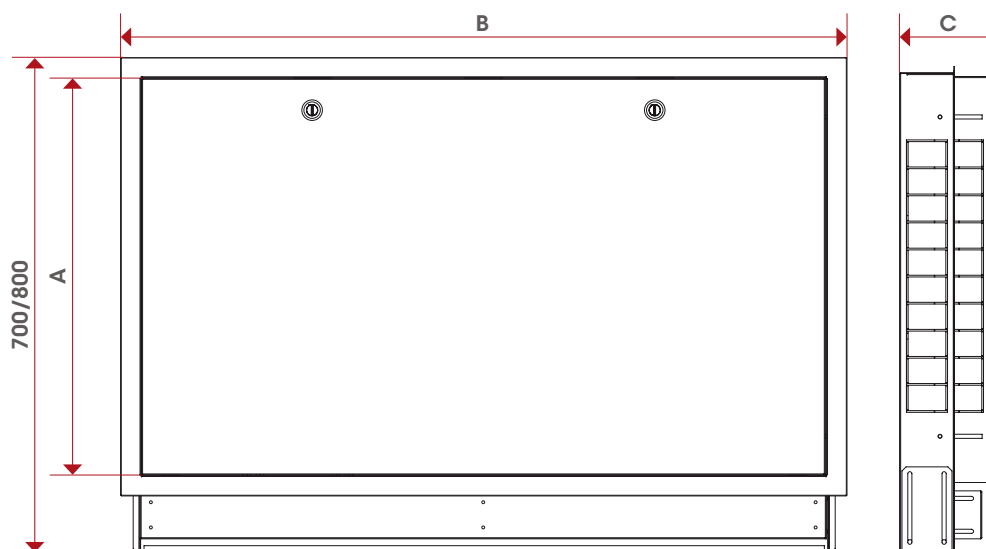




TEC

## MATERIALS

| POS. | DESCRIPTION       | N. | MATERIAL                             |
|------|-------------------|----|--------------------------------------|
| 1    | Outside framework | 1  | Zinc-plated steel EN 10346 DX51+Z140 |
| 2    | Bottom framework  | 1  | Zinc-plated steel EN 10346 DX51+Z140 |
| 3    | Inside framework  | 1  | Zinc-plated steel EN 10346 DX51+Z140 |
| 4    | Frame             | 1  | Zinc-plated steel EN 10346 DX51+Z140 |
| 5    | Cover             | 1  | Zinc-plated steel EN 10346 DX51+Z140 |
| 6    | Bracket           | 2  | Zinc-plated steel EN 10346 DX51+Z140 |
| 7    | Sleeve            | 2  | Polymer                              |
| 8    | Lever             | 2  | Polymer                              |
| 9    | Lever locker      | 2  | Polymer                              |
| 10   | Pin               | 8  | Steel 8.8                            |
| 11   | Guide             | 4  | Zinc-plated steel EN 10346 DX51+Z140 |
| 12   | Stick             | 2  | EN AW-6061                           |
| 13   | Screw             | 8  | Steel 8.8                            |
| -    | Daubing mesh      | 1  | Polypropylene                        |

OVERALL  
DIMENSIONS

|   | 500 x 600 x (80 - 130) | 600 x 600 x (80 - 130) | 700 x 600 x (80 - 130) | 800 x 600 x (80 - 130) | 1000 x 600 x (80 - 130) | 1100 x 600 x (80 - 130) |
|---|------------------------|------------------------|------------------------|------------------------|-------------------------|-------------------------|
| A | 600                    | 600                    | 600                    | 600                    | 600                     | 600                     |
| B | 500                    | 600                    | 700                    | 800                    | 1000                    | 1100                    |
| C | 80 - 130               | 80 - 130               | 80 - 130               | 80 - 130               | 80 - 130                | 80 - 130                |

METAL BOX

# 498ST

MOUNTING BRACKETS  
IN STEEL FOR METAL  
BOXES ART. 498



Centres distance mm. 200.  
Offset mm. 12.

| SIZE   | CODE      | PACKING |
|--------|-----------|---------|
| 3/4"   | 498ST034K | 1/40    |
| 1"     | 498ST100K | 1/40    |
| 1 1/4" | 498ST114K | 1/40    |



Centres distance mm. 200.  
Offset mm. 30.

| SIZE   | CODE       | PACKING |
|--------|------------|---------|
| 1"     | 498ST100KM | 1/40    |
| 1 1/4" | 498ST114KM | 1/40    |



Centres distance mm. 211.  
Offset mm. 30.

| SIZE | CODE        | PACKING |
|------|-------------|---------|
| 1"   | 498ST100KMB | 1/40    |

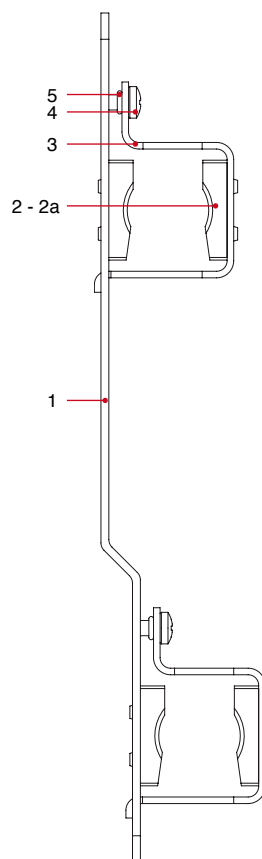
## TECHNICAL SPECIFICATIONS

The set includes a pair of brackets with screws and fixings.

For installation in box art. 498:

- 498STK: standard version. Offset: 12 mm. Suitable for outlets pipe up to 20mm.
- 498STKM: deeper version. Offset: 30 mm. Suitable for outlets pipe up to 25mm.
- 498STKMB: deeper version. Offset: 30 mm. Suitable for outlets pipe up to 25mm.

## MATERIALS 498STK



| POS. | DESCRIPTION                  | N. | MATERIAL             |
|------|------------------------------|----|----------------------|
| 1    | Bracket                      | 1  | Steel P11            |
| 2    | Dowel                        | 1  | EPDM                 |
| 2a   | Dowel ( only for 498STK 1" ) | 1  | MARFRAN E FG3 75A    |
| 3    | Collar                       | 1  | Steel P11            |
| 4    | Screw                        | 1  | Zinc-plated steel Fe |
| 5    | O-Ring                       | 1  | NBR                  |

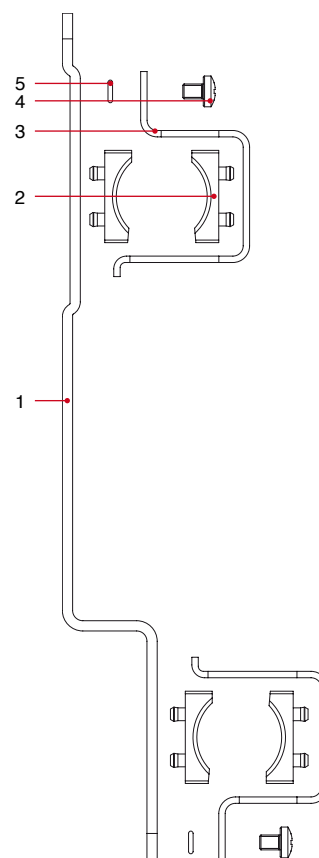
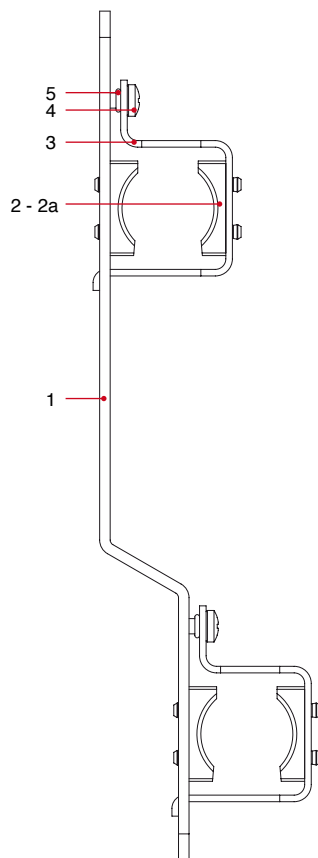




TEC

MATERIALS  
498STKM

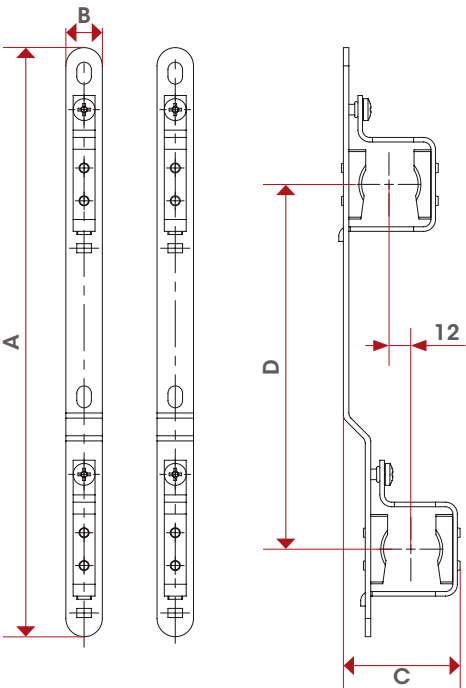
| POS. | DESCRIPTION                   | N. | MATERIAL             |
|------|-------------------------------|----|----------------------|
| 1    | Bracket                       | 1  | Steel P11            |
| 2    | Dowel                         | 1  | EPDM                 |
| 2a   | Dowel ( only for 498STKM 1" ) | 1  | Polyethylene PE      |
| 3    | Collar                        | 1  | Steel P11            |
| 4    | Screw                         | 1  | Zinc-plated steel Fe |
| 5    | O-Ring                        | 1  | NBR                  |

MATERIALS  
498STKMB

| POS. | DESCRIPTION | N. | MATERIAL             |
|------|-------------|----|----------------------|
| 1    | Bracket     | 1  | Steel P11            |
| 2    | Dowel       | 1  | Polyethylene PE      |
| 3    | Collar      | 1  | Steel P11            |
| 4    | Screw       | 1  | Zinc-plated steel Fe |
| 5    | O-Ring      | 1  | NBR                  |

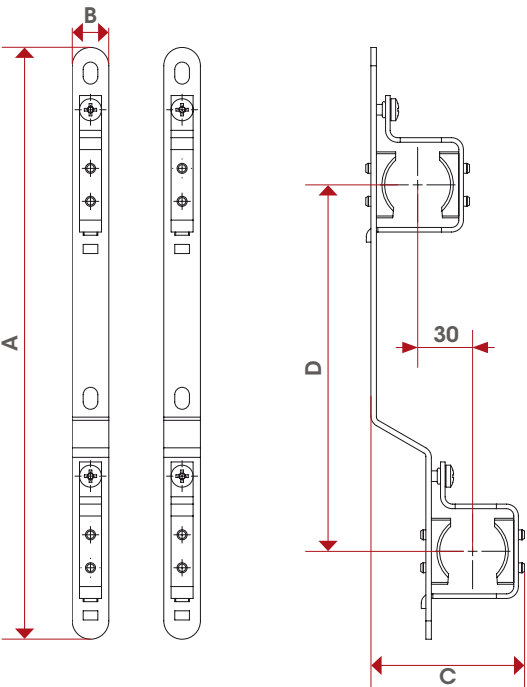
BRACKETS

OVERALL  
DIMENSIONS  
498STK



|   | 3/4" | 1"  | 1 1/4" |
|---|------|-----|--------|
| A | 323  | 323 | 323    |
| B | 20   | 20  | 20     |
| C | 64   | 66  | 73     |
| D | 200  | 200 | 200    |

OVERALL  
DIMENSIONS  
498STKM



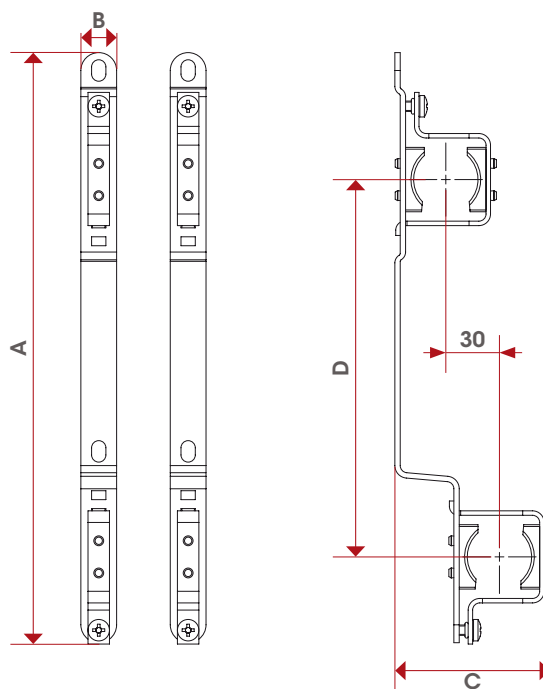
|   | 1"  | 1 1/4" |
|---|-----|--------|
| A | 323 | 323    |
| B | 20  | 20     |
| C | 84  | 91     |
| D | 200 | 200    |





TEC

OVERALL  
DIMENSIONS  
498STKMB

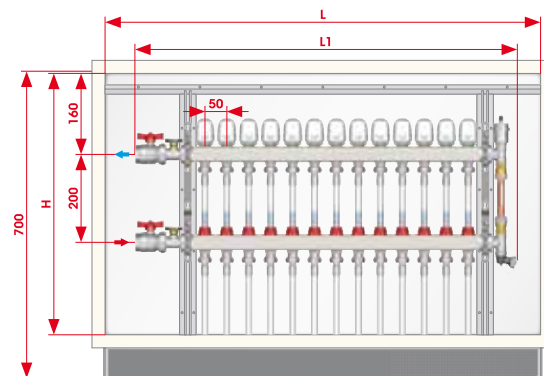
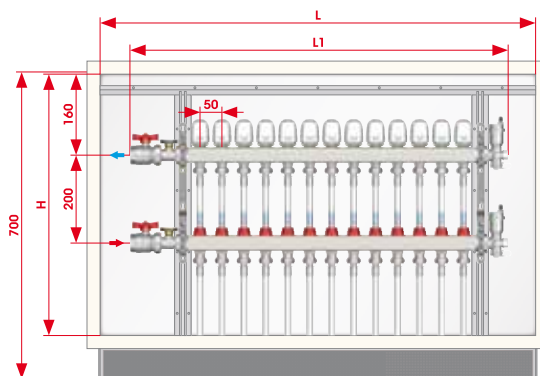


|   | 1"  |
|---|-----|
| A | 330 |
| B | 20  |
| C | 87  |
| D | 211 |

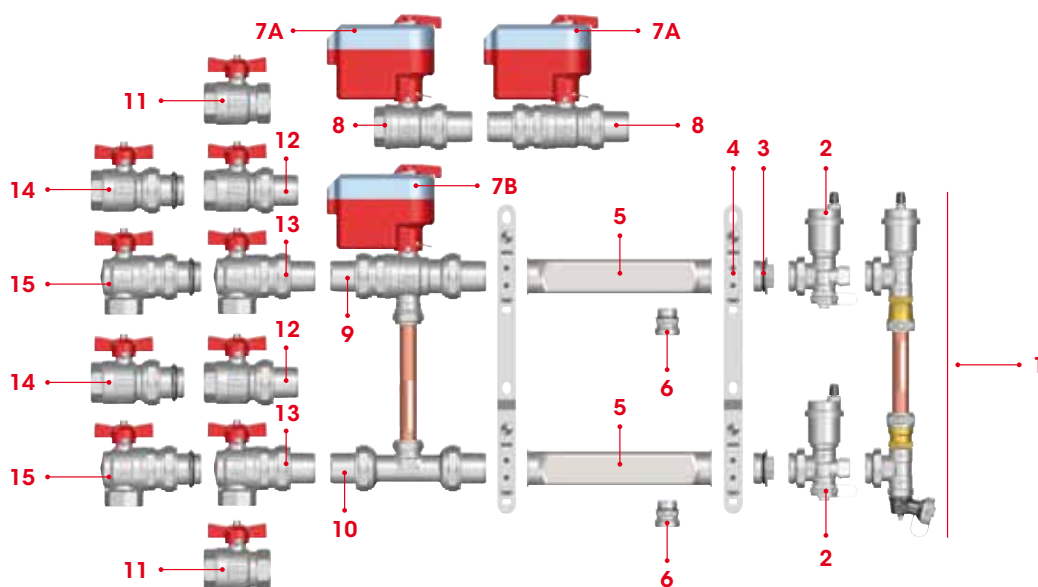
BRACKETS

## POSITIONING THE MANIFOLD ART. 862 INTO METAL BOXES

| CODE     | 498.500.600 | 498.600.600 | 498.700.600 | 498.800.600 | 498.1000.600 |
|----------|-------------|-------------|-------------|-------------|--------------|
| LxH (mm) | 500x600     | 600x600     | 700x600     | 800x600     | 1000x600     |
| Outlets  | 3-4         | 5-6         | 7-8         | 9-10        | 11-12-13     |
| MANIFOLD | 1"          |             |             |             |              |
| L1       | 422         | 522         | 622         | 722         | 872          |



## ACCESSORIES CHART ART. 852 FOR METAL BOXES



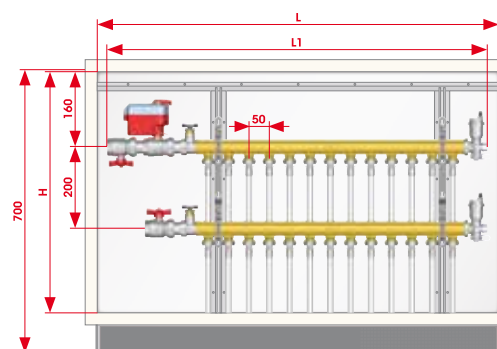
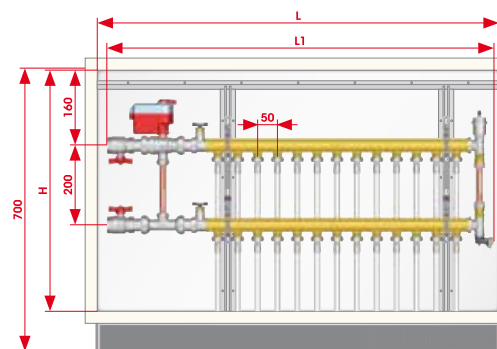
| POS | ART         | DESCRIPTION  |
|-----|-------------|--|
| 1   | 860BY       | Off-centre by-pass kit   |
| 2   | 489AR       | Adjustable end piece with drain valve and automatic air vent valve                       |
| 3   | 494         | Male end cap with o-ring   |
| 4   | 498ST       | Mounting brackets in steel for metal boxes   |
| 5   | 852         | Stainless steel manifold   |
| 6   | 518         | Male/male adapter  |
| 7A  | 990-991-989 | Electric actuator for zone ball valves -<br>Electric actuator for 2-way zone ball valves |
| 7B  | 990-991     | Electric actuator for zone ball valves   |
| 8   | 980-981     | 2-way zone ball valve - 2-way zone ball valve MM   |
| 9   | 984         | 3-way zone ball valve  |
| 10  | 988         | By-pass kit for zone valves  |
| 11  | 092         | Ball valve, T handle   |
| 12  | 098         | Ball valve for manifold  |
| 13  | 298         | Angle ball valve for manifold  |
| 14  | 098S        | Ball valve for manifold with o-ring on the union   |
| 15  | 298S        | Angle ball valve for manifold with o-ring on the union                                   |



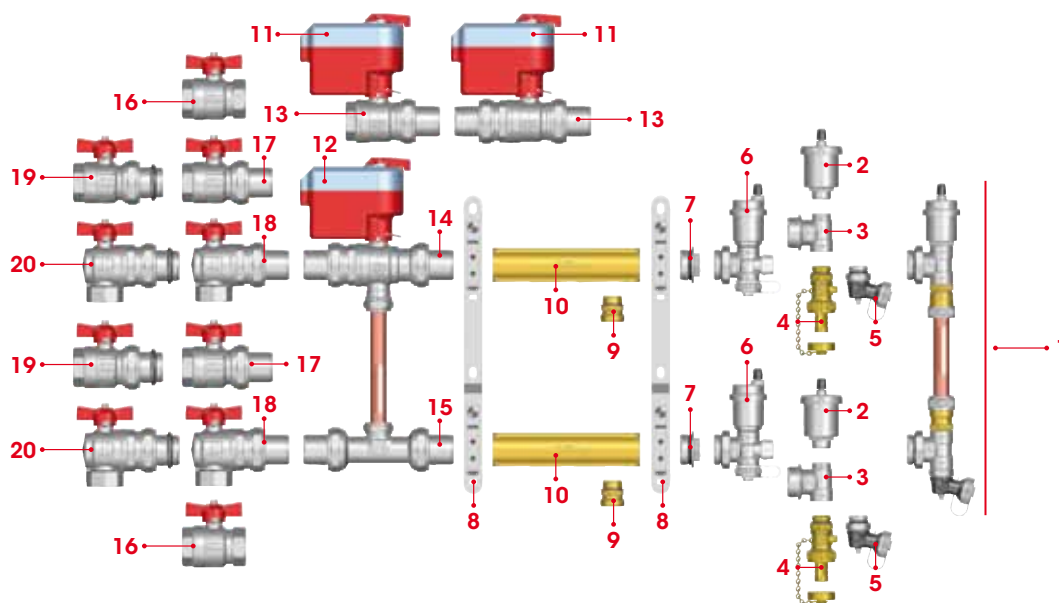
## POSITIONING MANIFOLD ART. 850 INTO METAL BOXES

| CODE     | 498.500.600 | 498.600.600 | 498.700.600 | 498.800.600 |
|----------|-------------|-------------|-------------|-------------|
| LxH (mm) | 500x600     | 600x600     | 700x600     | 800x600     |
| Outlets  | 3-4         | 5-6         | 7-8         | 9-10        |
| MANIFOLD | 3/4"        |             |             |             |
| L1       | 435         | 535         | 635         | 735         |

| CODE     | 498.600.600 | 498.700.600 | 498.800.600 | 498.1000.600 | 498.1100.600 |
|----------|-------------|-------------|-------------|--------------|--------------|
| LxH (mm) | 600x500     | 700x500     | 800x500     | 1000x600     | 1100x600     |
| Outlets  | 3-4         | 5-6         | 7-8         | 9-10         | 11-12-13     |
| MANIFOLD | 1" - 1 1/4" |             |             |              |              |
| L1       | 530         | 630         | 730         | 830          | 980          |



## ACCESSORIES CHART ART. 850 FOR METAL BOX



| POS | ART              | DESCRIPTION  |
|-----|------------------|--|
| 1   | 860BY            | Off-centre by-pass kit   |
| 2   | 362-362R         | Automatic air vent valve   |
| 3   | 490              | Male 3-way end fitting for manifolds   |
| 4   | 139              | Drain ball valve with brass hose connection  |
| 5   | 489SO            | Adjustable drain cock  |
| 6   | 489AR            | Adjustable end piece with drain valve and automatic air vent valve                     |
| 7   | 494              | Male end cap with o-ring   |
| 8   | 498ST            | Mounting brackets in steel for metal boxes   |
| 9   | 518              | Male/male adapter  |
| 10  | 850              | Distribution manifold in brass bar   |
| 11  | 990 - 991<br>989 | Electric actuator for zone ball valves<br>Electric actuator for 2-way zone ball valves |
| 12  | 990 - 991        | Electric actuator for zone ball valves   |
| 13  | 980 - 981        | 2-way zone ball valve - 2-way zone ball valve M/M                                      |
| 14  | 984              | 3-way zone ball valve  |
| 15  | 988              | By-pass kit for zone ball valves   |
| 16  | 092              | Ball valve, T handle   |
| 17  | 098              | Ball valve for manifolds   |
| 18  | 298              | Angle ball valve for manifolds   |
| 19  | 098S             | Ball valve for manifolds with o-ring on the union                                      |
| 20  | 298S             | Angle ball valve for manifolds with o-ring on the union                                |





# NOTES



ITAP S.p.A.  
Via Ruca 19  
25065 Lumezzane  
Brescia (ITALIA)  
Tel 030 89270  
Fax 030 8921990  
[www.itap.it](http://www.itap.it) - [info@itap.it](mailto:info@itap.it)