

WICU® – System solutions

The WICU® system consists of Wieland copper tubes equipped with coating, thermal or noise insulation.

WICU® tube

WICU® tubes have a mill-applied protective coating. They are therefore suitable for concealed installation under plaster or in environments with an aggressive atmosphere, and for installation outdoors, either above or below ground.

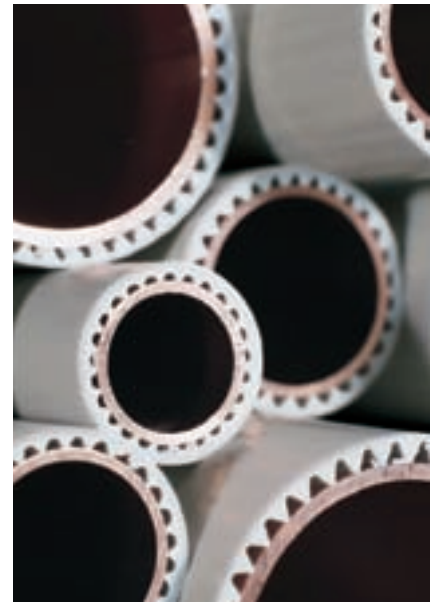
Applications:

- Domestic hot and cold water supply
- Central heating systems
- Gas services for heating/cooking

- Liquefied gas
- Oil services for heating
- Rainwater
- Pneumatics

Technical properties:

- The tubes conform to EN 1057 and are quality assured
- Protective coating conforms to EN 13349
- External protection: DIN 30672
- Fire behaviour conforms to EN 13501-1-E
- Colour of coating: grey
- Temperature range: up to 100 °C operating temperature



Standard dimensions [mm]	Total outside diameter [mm]	Permissible operating pressure [bar]	Volume of water [l/m]	Tube length per litre [m/l]	Coils 50 m	Coils 25 m	Straight lengths 5 m
8 x 1	12	163	0.028	35.37	•		
10 x 1	14	127	0.050	19.89	•		•
12 x 1	16	104	0.079	12.73	•	•	•
15 x 1	19	82	0.133	7.53	•	•	•
18 x 1	23	67	0.201	4.97	•	•	•
22 x 1	27	54	0.314	3.18		•	•
28 x 1.5	33	65	0.491	2.04			•
35 x 1.5	40	51	0.804	1.24			•
42 x 1.5	48	42	1.195	0.84			•
54 x 2	60	44	1.963	0.51			•



WICU®Flex

WICU®Flex is a plumbing tube with a flexible coating for rapid installation. The coating consists of closed-cell PE foam covered by a structured protective film. WICU®Flex is supplied in coils for rapid connection to manifolds, etc., and for underfloor installations.

Applications:

- Connecting tubes
- Domestic hot and cold water supply
- Central heating systems

Technical properties:

- The tubes conform to EN 1057 and are quality assured
- Insulation reduces the heat loss of the tube by up to 80 %
- Thermal conductivity of the insulation layer $\lambda = 0.040 \text{ W/mK}$ (40 °C)
- Fire behaviour conforms to EN 13501-1-E
- Colour of coating: grey

Standard dimensions [mm]	Total outside diameter [mm]	Permissible operating pressure [bar]	Volume of water [l/m]	Tube length per litre [m/l]	Coils 50 m	Coils 25 m	Straight lengths 5 m
12 x 1	24	104	0.079	12.73	•	•	
15 x 1	27	82	0.133	7.53	•	•	
18 x 1	30	67	0.201	4.97	•	•	
22 x 1	34	54	0.314	3.18		•	

WICU®Eco

WICU®Eco are copper tubes that are heat-insulated with stable PUR foam and equipped with an outer protective sleeve. The particular advantage of WICU®Eco is its extremely small external diameters while complying with the statutory provisions relating to required

insulation layer thickness, for example, for hot-water pipes with circulation or radiator connection lines in outdoor components. Installation and insulation are done in parallel.

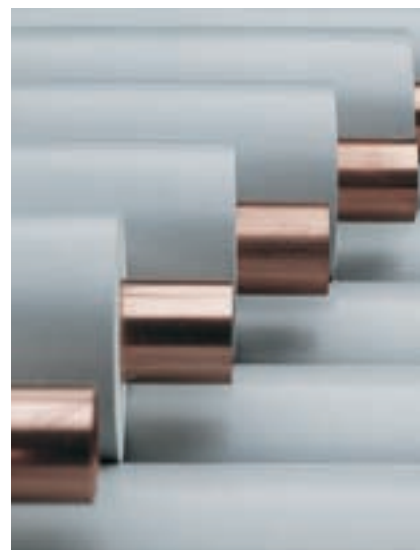
Applications:

- Domestic hot water supply
- Central heating systems

Technical properties:

- Tubes conform to EN 1057
- Temperature range: up to 100 °C operating temperature
- Colour of the coating: grey

100% EnEV	Total outside diameter [mm]	Permissible operating pressure [bar]	Volume of water [l/m]	Tube length per litre [m/l]	Straight lengths 5 m
12 x 1	32	104	0.079	12.73	•
15 x 1	36	82	0.133	7.53	•
18 x 1	40	67	0.201	4.97	•
22 x 1	45	54	0.314	3.18	•
28 x 1.5	63	65	0.491	2.04	•
35 x 1.5	71	51	0.804	1.24	•
42 x 1.5	90	42	1.195	0.84	•
54 x 2	113	44	1.963	0.51	•
50% EnEV	Total outside diameter [mm]	Permissible operating pressure [bar]	Volume of water [l/m]	Tube length per litre [m/l]	Coils 25 m
12 x 1	24	104	0.079	12.73	•
15 x 1	27	82	0.133	7.53	•
18 x 1	30	67	0.201	4.97	•

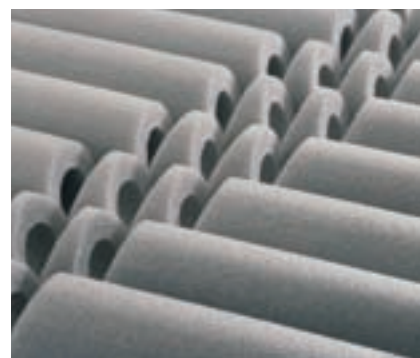


WICU®Eco accessories

A complete range of accessories is available for insulating tube joints, consisting of parts used as insulation foam and as external protection foil.



External protection



90° Insulation elbow

Dimensions mm	Insulation			External protection		
	90°-Elbow	T-Section	Hose	90°-Elbow	T-Section	Hose
12 x 1.0	•	•	•	•	•	•
15 x 1.0	•	•	•	•	•	•
18 x 1.0	•	•	•	•	•	•
22 x 1.0	•	•	•	•	•	•
28 x 1.5	•	•	•	•	•	•
35 x 1.5	•	•	•	•	•	•
42 x 1.5	•	•	•	•	•	•
54 x 2.0	•	•	•	•	•	•