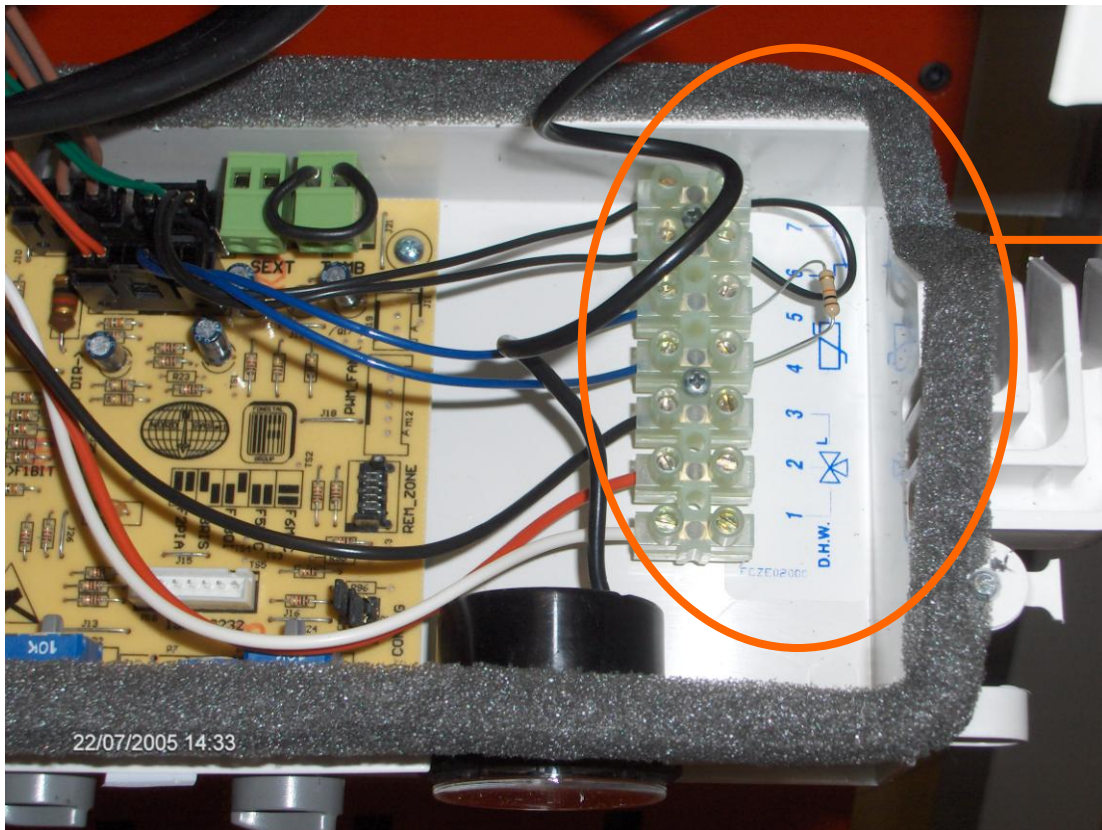


Cylinder connection to Tahiti Dual R wall-hung boiler

Tahiti Dual R boilers are designed to be connected to an external cylinder. Once the cylinder is connected, boiler electronics give priority to DHW production versus CH.

A seven position terminal board is installed next to the printed circuit board, it allows for connection of the thermostat, or as an alternative an NTC probe, and the three-way valve.



Cylinder connection terminal board.

Electric contacts of the adjustable thermostat:

Un-tighten the four screws of the thermostat cover in order to access the electric connections to the boiler, as illustrated in the electric layout below.



Electric layout for connection of thermostat equipped cylinder:

